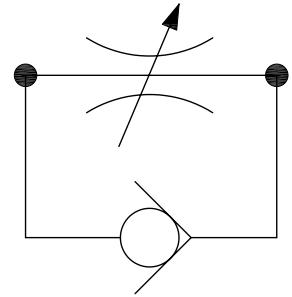


Flow Controlled and Check Valves



JIS-Graphic Symbol



Feature

- The flow control and check valve can adjust the flow in one direction and can flow freely in the reverse direction. There is a clear scale on the nameplate, which can be easily adjusted or reset

the flow rate.

- It is suitable for fast, slow, and fast return of the control system, especially for tool machinery.

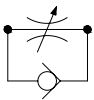
Model Description

FNC	-02
Model /Series	Thread Code Size (Inch)

FNC: Normal Type 02 : 1 / 4"
 FKC: Mechanical Type 03 : 3 / 8"

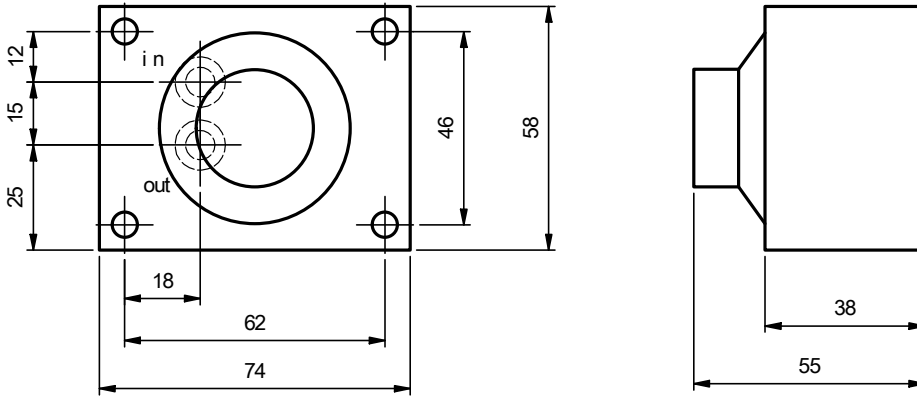
Specification

Model / Type		Free Flow Rate L/min	Operation Pressure (Max.) Kgf/cm ²	Flow Adjustment Range L/min	Weight kg	
Normal	Mechanical					
FNC-02	FKC-02	20	7	0.01~4	1.12	1.18
FNC-03	FKC-03	30		0.01~8	1.88	1.95

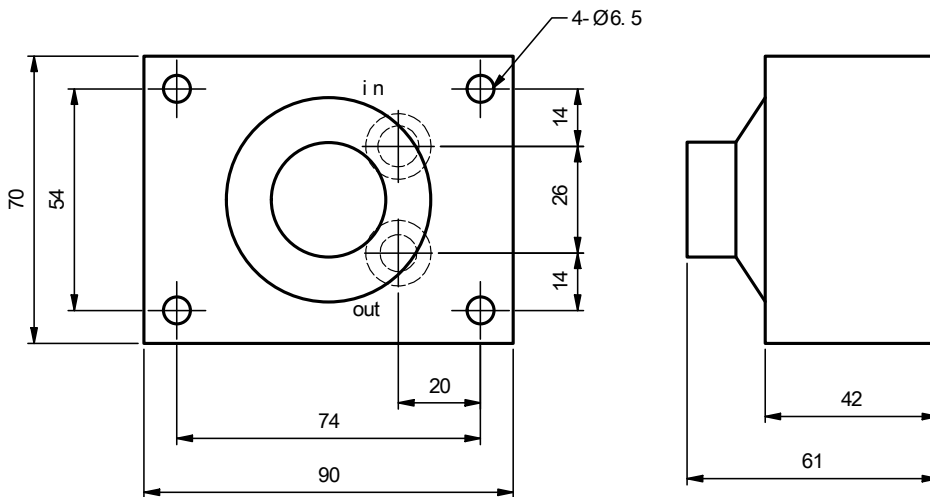


Dimensions

FNC-02



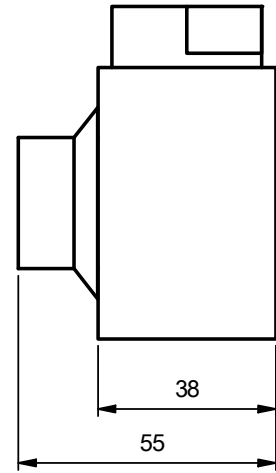
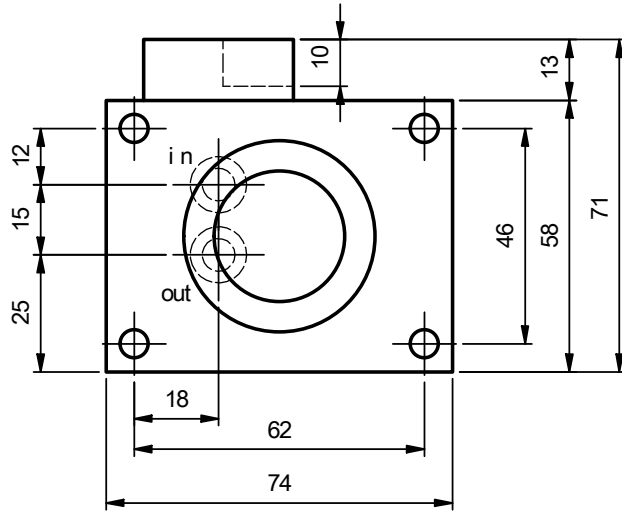
FNC-03



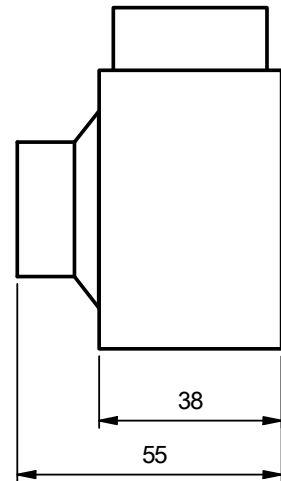
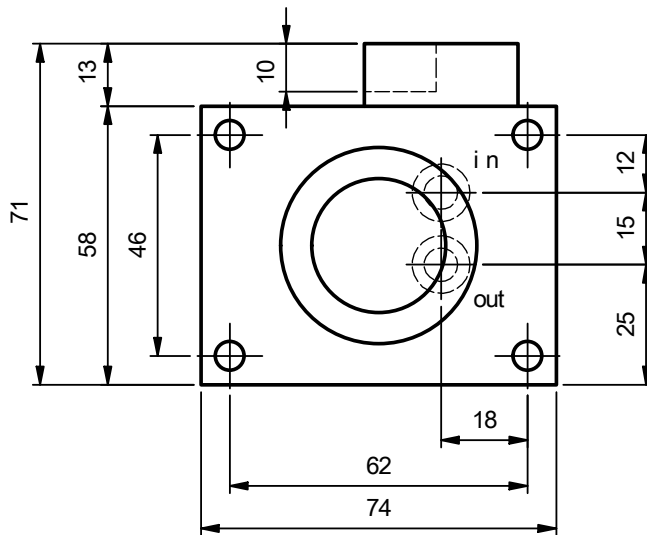
Flow Control Valves
Flow Controlled and Check Valves

Dimensions

FKC-02-A



FKC-02-B



Flow Control Valves
Flow Controlled and Check Valves

