



MDC SERİSİ NG06 MODÜLER İKİZ KİLİTLEME VALFİ (A HATTINA - B HATTINA - AB HATTINA)

NG06 Modüler ikiz kilitleme valfleri çift etkili silindirlerin sabitlenmesinde, sistemde patlama olması durumunda basınç altında pistonun sabitlenmesi kilitlenmesine veya pistonun hareketinin kısıtlanmasına yardımcı olur.

A veya B hattına isteğe göre tek taraflı yükün tutmasında istenen durumlarda tek taraflı ikiz kilitlemelerde mevcuttur.

NG06 Modüler ikiz kilitleme valfleri pleyt üzerine bağlantı ile diğer valfler uyumlu çalışmaktadır. Montaj yüzeyi NG06'dır. NG06 Modüler ikiz kilitleme valfleri mobil ve diğer sanayi alanlarında geniş kapsamda kullanılmaktadır.



Malzeme	Alüminyum
Bağlantı Şekli	NG06 Bağlantılı
Sızdırmazlık	Nitril O-ring (NBR)
Çalışma Sıcaklığı	-30 °C ile +110 °C
Isıl İşlem	İç parçalarda
Kullanım Alanı	Genel hidrolik uygulamaları

MDC SERIES NG06 MODULAR DOUBLE PILOT OPERATED CHECK VALVE (A PORT - B PORT - AB PORT)

NG06 Modular Double Pilot Operated Check Valves helps to lock or restrict the movement of the piston when fixing double acting cylinders, and also ensure to fixing the piston under pressure in case of burst in the System.

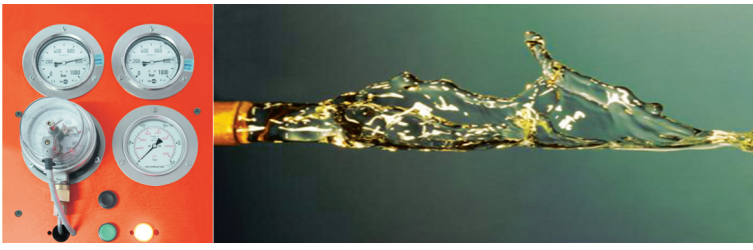
Single-sided double locking is available in cases where it is desired to hold a single-sided load to A or B line

NG06 Modular Double Pilot Operated Check Valves are connected to the subplates and compatible with other valves. Mounting surface is NG06. NG06 Modular Double Pilot Operated Check Valves are widely used in mobile and other industrial areas.

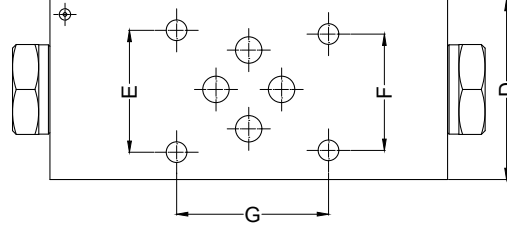
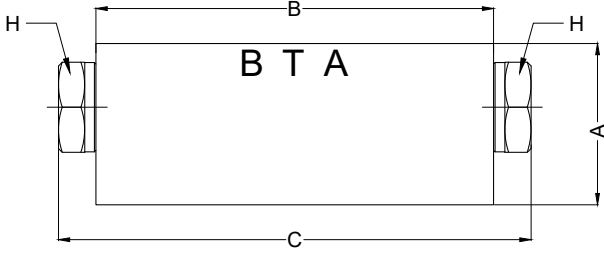


Material	Aluminium
Connection Type	NG06 Connection
Sealing	Nitrile O-ring (NBR)
Working Temperature	-30 °C and +110 °C
Heat Treatment	Internal parts
Applications	General Hydraulic Applications



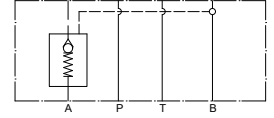


MDC SERİSİ NG06 MODÜLER İKİZ KİLİTLEME VALFİ A HATTINA
MDC SERIES NG06 MODULAR DOUBLE PILOT OPERATED CHECK VALVE A PORT

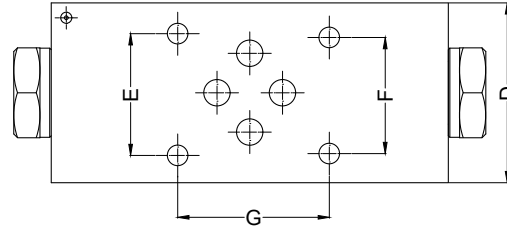
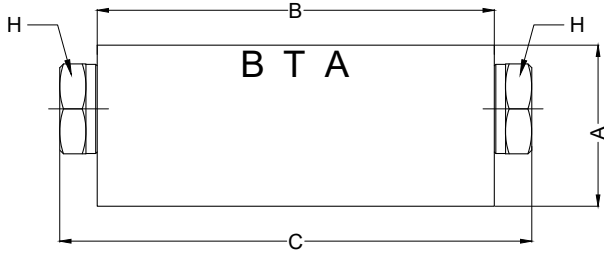


Teknik Özellikler
Technical Specifications

Kod (Code)	Bağlantı Ölçüsü (Connection Type)	Çalışma Basıncı (Working Pressure) Bar	Max. Yağ Akışı (Max. Flow) Lt/Min	Ölçüler - mm (Dimensions - mm)							
				A	B	C	D	E	F	G	H
MDCNG06N-A	NG06	350	40	43	106	126	48	32.5	31	40.5	AA24

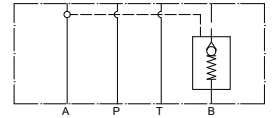


MDC SERİSİ NG06 MODÜLER İKİZ KİLİTLEME VALFİ B HATTINA
MDC SERIES NG06 MODULAR DOUBLE PILOT OPERATED CHECK VALVE B PORT

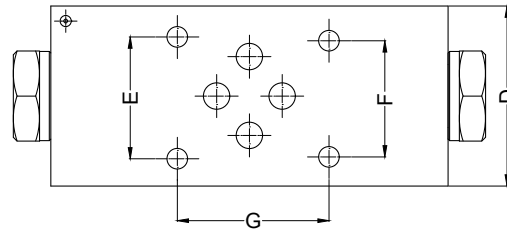
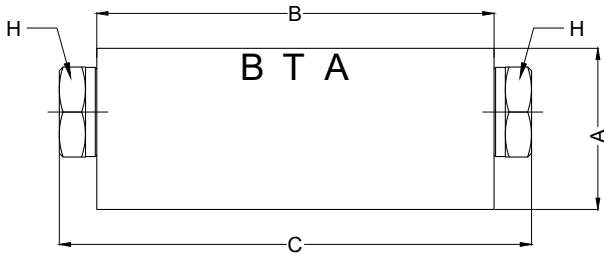


Teknik Özellikler
Technical Specifications

Kod (Code)	Bağlantı Ölçüsü (Connection Type)	Çalışma Basıncı (Working Pressure) Bar	Max. Yağ Akışı (Max. Flow) Lt/Min	Ölçüler - mm (Dimensions - mm)							
				A	B	C	D	E	F	G	H
MDCNG06N-B	NG06	350	40	43	106	126	48	32.5	31	40.5	AA24

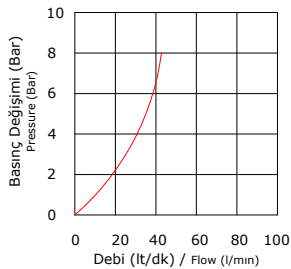
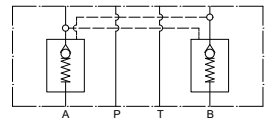


MDC SERİSİ NG06 MODÜLER İKİZ KİLİTLEME VALFİ
MDC SERIES NG06 MODULAR DOUBLE PILOT OPERATED CHECK VALVE



Teknik Özellikler
Technical Specifications

Kod (Code)	Bağlantı Ölçüsü (Connection Type)	Çalışma Basıncı (Working Pressure) Bar	Max. Yağ Akışı (Max. Flow) Lt/Min	Ölçüler - mm (Dimensions - mm)							
				A	B	C	D	E	F	G	H
MDCNG06N	NG06	350	40	43	106	126	48	32.5	31	40.5	AA24



FERRO / MDC SERİSİ NG06 MODÜLER İKİZ KİLİTLEME VALFİ (A HATTINA - B HATTINA - AB HATTINA)
FERRO / MDC SERIES NG06 MODULAR DOUBLE PILOT OPERATED CHECK VALVE (A PORT - B PORT - AB PORT)